

Installing GPenSIM

Installation takes five simple steps:

1. Unzip the GPenSIM v10 packs:

Unzip the GPenSIM System files (a collection of M-files) under a directory, say “d:\GPenSIM\GPenSIM10”.

Similarly, unzip the examples file (Examples-01-38.zip) under another directory, say “d:\GPenSIM\Examples-01-38”

2. Set MATLAB Path Command:

- Start MATLAB. Go to the file menu in MATLAB, and select “set path” command:

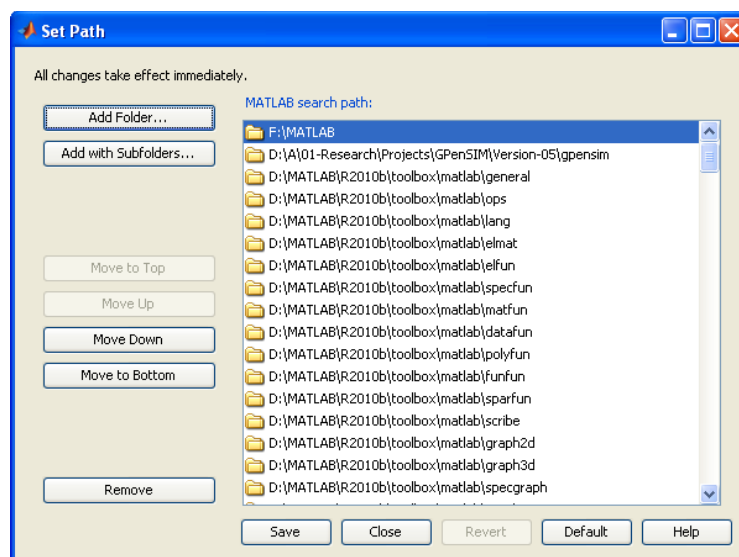


Figure 1-1: Set Path dialog

- Select “Add with Subfolders”:

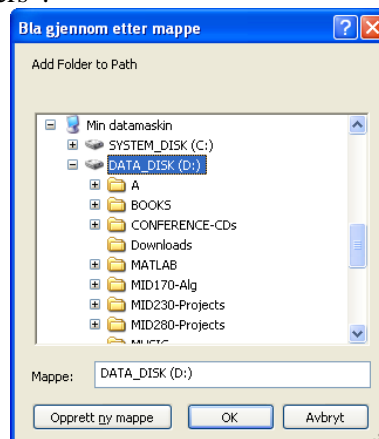


Figure 1-2: Add folder dialog

3. Add GPenSIM Directory:

A new dialog box will appear. Browse through the directories and select the directory where you have unzipped the **GPenSIM v10 System Files**.

CAUTION! Add ONLY the folders and subfolders of GPenSIM systems files to the MATLAB path. DO NOT add the folders of examples or your working folders to the path.

4. Save and close the set path dialog box.

5. Test Installation

Go to MATLAB command window and type 'gpsim'; if the following (or similar) output is printed, then the installation is complete.

```
>> gpsim
-----
GPenSIM version 10.0;   Lastupdate: January 2015
(C) Reggie.Davidrajuh@uis.no
http://www.davidrajuh.net/gpsim
-----
>>
```